

PLAYER PIANO SUPPLIES



THE FINEST IN MUSICAL INSTRUMENT LEATHERS AND RUBBERIZED CLOTHS

In conjunction with our supplier, Australia Felix Leather Company, we have successfully been able to fill the void of a domestic manufacturer not being able to provide different types of rubber cloth. In addition, we can now provide various silk backed cloths and kangaroo leathers. Even though costs are necessarily higher because of the need to import these materials, the response to the excellent quality has been extremely positive.



RUBBER CLOTH PRODUCTS

Only 100% natural rubber is used in the bonding of all of the following rubberized cloths:

MOTOR CLOTH

Made with double ply cotton, .012" thick and 53" in width.

No. 652 - Per Yard

THIN PNEUMATIC CLOTH

Made with superfine cotton backing, .008" thick and 59" in width.

No. 653 - Per Yard

THIN PNEUMATIC CLOTH

Stripped in 1-3/8" wide rolls that are 100 ft. Long.

No. 661 - Per Roll

MEDIUM BELLOWS CLOTH

Made with 100% cotton, .030" thick and 60" in width.

No. 667 - Per Yard

HEAVY BELLOWS CLOTH

Made with 100% brushed (fuzzy backed) cotton, .044" thick and 61" in width.

No. 658 - Per Yard

BELLOWS CLOTH

Made with 100% cotton backed .020" thick and 63" in width.

No. 659 - Per Yard



KANGAROO LEATHER PRODUCTS

Premium grades of lightweight, chrome tanned kangaroo leather is available for use in restoring player pianos, nickelodeons, orchestrions, pipe organs, and other automatic musical instruments. Because of the inherent structural characteristics of kangaroo skin, the hides provide the strongest leather available in the world. At the present time we have the following leathers available:

KANGAROO LEATHER SKINS

Measuring .040" to .050" thick for rotary pumps and bellows.

No. 662 - Per Sq. Ft.

KANGAROO LEATHER STRIPS

Cut and glued from full skins that are 6" wide.

No. 663 - Per running foot.

KANGAROO POUCH LEATHER

Measuring .010" to .012" thick for pouches and pneumatics.

No. 666 - Per Sq. Ft.

DOMESTIC NYLON PNEUMATIC CLOTH

PNEUMATIC CLOTH

Nylon sheeting coated with polyurethane, .004" thick and 60" in width. Very thin, very flexible, very durable. Wine colored. Use P.V.C. Glue with this material.

No. 668 - Per Yard



PNEUMATIC CLOTH

Same as No. 668 but slit into 1-3/8" wide rolls 100 feet long. Ready to use - save time, reduce waste.

No. 660 - Per Roll.



PLAYER PIANO SUPPLIES

LEATHER

FULL SKINS ONLY



TAN IMPORTED PNEUMATIC LEATHER

Thin substance for diaphragm or pouch leather for primary and secondary pouches. Medium and heavy substance for bellows and for covering air motors, switch pneumatics and striking pneumatics. Skins approximately 7 Sq. Ft. Each.

No. 676A - Thin Pneumatic Leather. Per Sq. Ft.

No. 676B - Medium Pneumatic Leather. Per Sq. Ft.

No. 676C - Heavy Pneumatic Leather. Per Sq. Ft.

ZEPHIR SKIN

Simili colon leather; moth proof. Prepared from ovine animal intestinal membrane. These skins are absolutely air tight, extremely flexible, and will stand indefinite wear without hardening or cracking. About .002" thick. 20" x 7" approximate size.

No. 670 - Zephir Skin. Each

TUBING CONNECTIONS



STRAIGHT BRASS CONNECTIONS

No. 602A - For 9/64" I.D. tubing. Each

No. 602B - For 3/16" I.D. tubing. Each

No. 601C - For 1/4" I.D. tubing. Each

No. 601D - For 3/8" I.D. tubing. Each

No. 601F - For 1/2" I.D. tubing. Each

90° BRASS ELBOWS

No. 604A - For 9/64" I.D. tubing. Each

No. 604B - For 3/16" I.D. tubing. Each

PLASTIC CONNECTIONS FOR TUBING

No. 601A - "Y" Connections for 9/64" tubing. Each

No. 601E - "T" Connections for 9/64" tubing. Each

VALVE LEATHER



VALVE LEATHER

Tough tanned brown leather, rather stiff. Used mostly for reed organ bellows valves and player valves. Skins average 10 to 22 square feet. Sold by the full skin only.

No. 718 - Per Sq. Ft.

BELLOWS VALVE FLAPS

Same material as above but cut into strips for bellows valve flaps.

No. 717A - 3" x 15". Each

No. 717B - 2-1/2" x 14". Each

TUBING



BLACK NEOPRENE TUBING

Finest Grade. Per box

Stock #	Application	Inner Diameter	Wall Thickness	Box Quantity
606A	Tracker Bar	9/64"	1/32"	100 Feet
606B	Reproducers	9/64"	3/64"	100 Feet
605A	Expression Buttons	3/16"	3/64"	50 Feet
605B	Expression Buttons	1/4"	1/16"	20 Feet
605C	Controls	5/16"	1/16"	20 Feet
605D	Controls	3/8"	5/64"	13 Feet
605E	Controls	7/32"	3/64"	50 Feet

TWILL COVERED HOSE

The finest available. Per ft.

Stock #	Inner Diameter	Wall Thickness
620B	1/2"	1/8"
620C	5/8"	1/8"
620D	3/4"	1/8"
620E	1"	5/32"
620F	1-1/8"	5/32"
620G	1-1/4"	5/32"
620H	1-1/2"	5/32"
620J	1-1/16"	1/8"
620K	7/8"	1/8"



PLAYER PIANO SUPPLIES

QRS STANDARD TESTER ROLL

88 note roll for player pianos.
No. 612 - Each



PLAYER ROLL TABS

For repair of player rolls.
No. 613 - Each



RUBBER MATTING

Corrugated; black; 1/8" thick; 36" wide.
No. 607B - Rubber Matting. Per Yard



PUMPING PEDAL MATS (NOT SHOWN)

Made of corrugated rubber. 4" x 10".
No. 607A - Pumping Pedal Mats. Pair



PLAYER PEDALS

Square caps in polished brass. Overall lengths: left pedal 8-3/4" center pedal 7-1/2"; right pedal 10".

No. 645 - Set of 3
No. 645A - Per Pair

LEATHER NUTS

Choice of six sizes.



Stock#	Diameter	Hole Diameter	
No. 603A	3/16"	.0635	Per 100
No. 603B	1/4"	.070	Per 100
No. 603C	5/16"	.070	Per 100
No. 603D	3/8"	.086	Per 100
No. 603E	7/16"	.0635	Per 100
No. 603F	1/2"	.0635	Per 100



PLAYER PEDALS

Round caps in polished brass. Overall lengths: left pedal 9"; center pedal 11-1/4"; right pedal 10-1/2".

No. 643 - Set of 3
No. 643A - Per Pair



TRACKER BAR CLEANER

Draws lint and dust out from tracker bar, and holds it in pump. No disturbance of piano necessary. Made of aluminum, with soft rubber nozzle. Removable dust screen.

No. 626 - Tracker Bar Cleaner. Each
No. 626A - Extra Rubber Nozzles. Each
No. 626B - Filter. Each



PLAYER PIANO SUPPLIES

LARGE BRASS ELBOWS

For use with corresponding letter of
Twill Hose No. 620.

No. 600A - 3/8" O.D. Each

No. 600B - 1/2" O.D. Each

No. 600C - 5/8" O.D. Each

No. 600D - 3/4" O.D. Each

No. 600E - 1" O.D. Each

No. 600F - 1-1/8" O.D. Each

No. 600G - 1-1/4" O.D. Each

No. 600H - 1-1/2" O.D. Each

No. 600K - 7/8" O.D. Each



SPOOL PINS

Take off spool end pins.

No. 614L - Straight for left side. Each

No. 614R - Fluted for right side. Each

PLAYER BLEED OR VENT CUPS

Brass vent caps.

No. 678 - Each



TRACKER BARS

85 note, solid brass, with sustaining loud pedal and double
tracking holes. Overall length 13".

No. 610 - Each



TRANSPOSING TRACKER BAR

Same as No. 610 but has moving center for transposing,
85 note.

No. 690 - Each



LADDER CHAIN

For player transmissions.

No. 609-4 - Four links per inch. Per Yard

No. 609-5 - Five links per inch. Per Yard

SPOOL ENDS

Replacement spool ends for player rolls.

No. 615L - Left ends. Each

No. 615R - Rights slotted. Each



FLAT STEEL SPRINGS

Outward pressure for pedals; 8 lbs. pressure 8" long.

No. 8008 - Each

Inward pressure for reservoirs.

No. 0880 - 8 lbs. pressure, 8" long. Each

No. 0881 - 5 lbs. pressure, 8" long. Each



PRECISION VACUUM GAUGE

A Precision Vacuum Gauge is the only way to make exact
measurements. 2-1/2" face, graduated 0-60" of water
vacuum. Has tapered hose connection for easy attachment to
pump hose. Supplied with ball base.

No. 616 - Vacuum Gauge. Each



PLAYER PIANO TRANSMISSIONS

Now available. NEW player piano transmissions for
replacements. Will fit most standard players with minor
modifications. Specific measurements will be given on request.

No. 624 - Complete Transmission. Each



PLAYER PIANO PUMP/AUTO REROLL UNIT



DELUXE SUCTION BOX KIT

Box size is 7-1/2" x 7-1/2" x 10". Motor noise can be reduced because instead of running at a pre-set speed, motor speed is in direct relation to the vacuum required. A switching signal on reroll reduces motor turnover to a minimum idle during rewind, then switches back to your preset volume on play. The motor runs cooler and with no noticeable sound on soft playing as well as reroll. Without using the method employed by this kit, a suction box would have to run the same fast speed and regulate vacuum only by restricting the flow, or bypassing. This has always accomplished the effect, but does not decrease the ever-present running noise of maximum motor speed. The tightness



of the player system will determine the setting of the volume knob. It can be turned up to full speed to produce 45 inches of vacuum. This kit comes complete with installation instructions. It has built-in check valves, so the original foot-pump feature remains operational. All pre-wired controls - just set box in place and drill one hole in original pump channel. Control panel mounts on underside of keybed with off/on switch, volume knob and rewind speed adjustment all in this one unit.

No. 621 - Player pump complete for hard to pump old players. Each

No. 623 - Automatic re-roll unit for Full Size Players Only. Each

REPLACEMENT PLAYER ITEMS

AMPICO REPLACEMENT PARTS

SWITCHES (All less lever, spring & pin).



No. 630 - Pedal Switch. Each
No. 631 - Modify Switch. Each
No. 632 - Repeat Switch. Each
No. 633 - On/Off Switch. Each

SLIDE VALVE, WITH SPRING

No. 634 - Each



MISCELLANEOUS ITEMS

Aeolian Complete Player Valve Assembly

No. 699 - Each



TOOLS

Tracker Tube Puller.

No. 694 - Each



TRANSMISSION PARTS

No. 680 - Transmission Frame. Each

No. 682 - Collar with Set Screw. Each

No. 683 - Shifter Pivot. Each

No. 684 - Sliding Brass Clutch. Each

No. 685 - 14 Tooth Pinion. Each

POUCH DISHING TOOL, VACUUM OPERATED

For production work.

No. 696 - Each



ORGAN SUPPLIES

STOP KNOBS

Black enamel finish.

No. 722 - Straight Front. Each

No. 723 - Beveled Front. Each



STOP RODS

Black. 9/16" dia.; 7-1/2" long, with shoulder.

No. 729 - Each

CELLULOID STOP FACES (NOT SHOWN)

7/8" in diameter.

No. 721-1 - Aeoline

No. 721-2 - Bass Coupler

No. 721-3 - Bass Forte

No. 721-4 - Bassoon

No. 721-5 - Bellows Signal

No. 721-6 - Bourdon

No. 721-7 - Celeste

No. 721-8 - Celestina

No. 721-9 - Cello

No. 721-10 - Clarabella

No. 721-11 - Clarinet

No. 721-12 - Cor Anglais

No. 721-13 - Cornet

No. 721-14 - Coupler

No. 721-15 - Cremona

No. 721-16 - Diapson

No. 721-17 - Diapson Bass

No. 721-18 - Diapson Forte

No. 721-19 - Diapson Treble

No. 721-20 - Dolce

No. 721-21 - Dulcet

No. 721-22 - Dulciana

No. 721-23 - Echo

No. 721-24 - Echo Horn

No. 721-25 - Flute

No. 721-26 - Flute Forte

No. 721-27 - Forte

No. 721-28 - Gamba

No. 721-29 - Harp Aeoline

No. 721-30 - Horn

No. 721-31 - Melodia

No. 721-32 - Oboe

No. 721-33 - Octave Coupler

No. 721-34 - Orchestral Forte

No. 721-35 - Piano

No. 721-36 - Piccolo

No. 721-37 - Principal

No. 721-38 - Principal Forte

No. 721-39 - Sub Bass

No. 721-40 - Swell

No. 721-41 - Treble Coupler

No. 721-42 - Treble Forte

No. 721-43 - Tremolo

No. 721-44 - Trumpet

No. 721-45 - Viola

No. 721-46 - Viola Dolce

No. 721-47 - Violin

No. 721-48 - Voix Celeste

No. 721-49 - Vox Humana

No. 721-50 - Vox Jubilante



REED HOOK

For withdrawing organ reeds. Screw driver end. Coppered iron. 8" long.

No. 713 - Each



VALVE SPRINGS

Fine imported quality.

No. 719A - 3-1/2" long. Dozen

No. 719B - 4-1/2" long. Dozen

ORGAN ROLLERS

Made of select hardwood.

No. 701 - Set of 4



ORGAN CASTERS

Made of quality pressed steel.

No. 720 - Set of 4 Casters. Per Set



PALLET RODS

Made of maple. 3/16" dia.; 5-1/4" long.

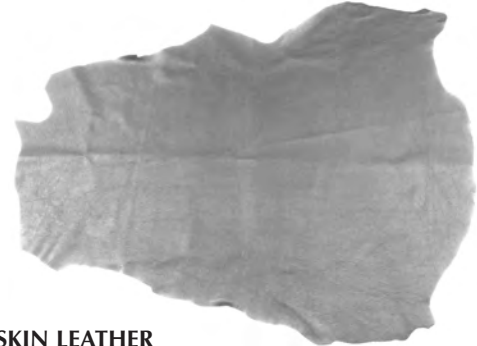
No. 706 - Each



REED SCRAPER

For tuning reeds. 11" long.

No. 714 - Each



SHEEPSKIN LEATHER

Very best full size sheepskins. Imported white alum tannage.

Acid free; non corrosive. **SOLD IN FULL SKINS ONLY.**

Average skin 8 square feet.

No. 670-1/2 - Gusset, imported white alum tannage. Per Sq. Ft.

No. 671 - Pallet; Lambskin; thin, soft and fine; for Pitman, Chime pneumatics. Per Sq. Ft.

No. 673 - Bellows rib. Medium thickness; stiff. Per Sq. Ft.

No. 675 - Genuine skin packing; brown fleshers; buffed one side. Per Sq. Ft.

PEDAL HINGES

Wrought brass, with bright iron staple 17/32" wide.

No. 726 - Each



ORGAN PEDAL WEBBING

For reed organ pedal straps and hinges on large pneumatics, swells and equalizers. 2" wide.

White: herringbone weave; extra-strong; tightly woven.

No. 716 - Per Yard



ORGAN PUNCHINGS

Made from 100% wool bushing cloth. 3/8" diameter. .050" thick. With wire hole.

No. 830 - Per 100

