

FINISHING SUPPLIES



H. Behlen & Bro.'s wood finishing products...



come from over a 100 year tradition of quality and expertise. Founded in 1888 by a German-born chemist, the firm was first to manufacture finishing products used by European master craftsmen for the American woodworker. Behlen's extensive knowledge of furniture making and finishing has been behind the development of every product, and has made the Company an acknowledged leader in its field. Today, these products are top choices of professional and amateur craftsmen for easy, controlled applications, and beautiful results.

QUALARENU #1 AMALGAMATOR

A modern method of renovating an old cracked or alligatored finish. May be brushed, sprayed or padded on the old surface. Eliminates the need for restaining and refilling with paste wood fillers. Will not work on polyurethane, epoxy or polyester finishes.

No. 1475 - Pint. Each



PARAFFIN OIL

A mineral oil used as a lubricant for rubbing with pumice or rottenstone. Saves both time and effort in the rubbing. Formulated with fine cutting oils. Quart can.

No. 1480 - Each



WOOL-LUBE

Wool-Lube is a specially formulated lubricant for preparing furniture before waxing and polishing. Superior for removing pack marks, soiling, or fingerprints. Furniture rubbed with Wool-lube can be recoated with lacquer with good adhesion. Water soluble, non silicone and fast clean up. Apply with steel wool, nylon pad or sandpaper. Pint bottle.

No. 1414 - Each



DE WAXER

Removes oil, wax & grease
Also used to remove wax deposits left after the use of removers. Cleans old finishes prior to restoration. One quart can.

No. 1499 - Each



ROTTENSTONE

One of the finest substances used in wood finishing. Primarily used to polish a lacquered or varnished surface after a coarse rubbing with Pumice Stone. 1 lb. Can.

No. 410 - Each



FINISHING SUPPLIES



DRY POWDERED ANILINE STAIN

Water/Alcohol Soluble

Ideal for refinishing & touch-up work. Rapid drying and will not raise the grain of the wood. When used by itself as a stain, it should be dissolved with wood alcohol; as a tinting medium, it should be dissolved in Behkol solvent. Available in a 2 oz. jar.

- No. 450-300** - Golden Oak. Each
- No. 450-310** - Dark Mahogany. Each
- No. 450-320** - Walnut. Each
- No. 450-321** - American Walnut. Each
- No. 450-330** - Jet Black. Each
- No. 450-343** - Lemon Yellow. Each
- No. 450-378** - Cherry. Each

OZ CREAM POLISH®

Is excellent for all types of smooth surfaces: wood, marble, tile, leather, and painted or chrome metal. Is non-flammable, non abrasive, greaseless, quick drying, and contains no silicones. OZ® Cream Polish concentrated formula cleans, polishes and protects. Just apply, wipe, and buff up a beautiful sheen.

- No. 1453** - 32 oz. can OZ® Polish. Each
- No. 1452** - 12 oz. Environmentally Safe Pump Bottle. Each



BURN-IN STICKS

Manufactured from the finest shellacs and resins. Will not lift out and accepts any type of over finish. May be used on any type of surface including marble. 7" long.

- No. 407-001** - Dark Mahogany. Each
- No. 407-004** - Walnut Dark. Each
- No. 407-005** - Fruitwood/Oak. Each
- No. 407-006** - Cherry. Each
- No. 407-007** - White. Each
- No. 407-008** - Black. Each
- No. 407-009** - Maple. Each
- No. 407-010** - Amber Dark. Each
- No. 407-011** - Amber. Each
- No. 407-012** - Clear. Each
- No. 407-013** - Walnut Dark Brown. Each
- No. 407-015** - Mahogany Medium. Each
- No. 407-018** - Dark Cherry. Each
- No. 407-818** - Burnt Umber. Each
- No. 407-815** - Golden Oak. Each
- No. 407-873** - Red Mahogany. Each

AEROSOLS

BLUSH ERASER®

Humid or cold weather can cause a finish to turn white or "blush". Behlen Blush Eraser reflows the lacquer and allows the trapped moisture to escape. 13 oz. can.

- No. 1417-100** - Blush Eraser. Each



CLEAR LACQUER

Produces the finest air drying lacquer for the protection of tarnishable solid or plated metal. 12 oz. aerosol can.

- No. 1438** - Clear Lacquer. Each



SPRAY LACQUER

Especially formulated to enable the experienced as well as the novice to do a professional job. Two or three coats of the desired sheen will develop a durable, alcohol resistant lacquer finish. Dries quickly. The finish is alcohol resistant. 13 oz. can.

- No. 1417-102** - Spray Lacquer Clear Gloss. Each
- No. 1417-103** - Spray Lacquer Clear Satin. Each



SANDING SEALER

One of the most versatile products used in furniture touch-up. Fills in and levels surface scratches, burn-in repairs, and smooths 'french padded' repairs. Fast drying. Seals in stains prior to final top coat of finish for faster build up. 13 oz. can.

- No. 1417-104** - Sanding Sealer. Each



FINISHING SUPPLIES

RUBBING MEDIUMS

DELUXING COMPOUND

A combination of waxes and buffing materials which produce a smooth, hard, mirror like finish. Recommended for use on lacquer, varnish, acrylic, or enamel finishes. Can be used on any shade of furniture including white. Will not harm the finest of finishes. Contains no silicones. 16 oz. can.

No. 1444 - Deluxing Compound. Each



RUBBING COMPOUND FOR THE FINAL RUBBING

A semi-paste, extra fine abrasive compound for rubbing down the final coat of lacquer, shellac or varnish. Removes minor surface imperfections and over spray on spot repairs. 16 oz. can.

No. 1445 - Rubbing Compound. Each



FINISH-RUB

An ultra fine paste rubbing compound. Applied with cloth or steel wool for buffing out surface scratches and other minor defects. Restores the luster of dull finishes on furniture. 16 oz. can.

No. 1446 - Finish-Rub. Each



SCRATCH OFF

Hides scratches and minor imperfections on new or used furniture. Just spray, wait a minute and polish. 13 oz. aerosol can.

No. 1302DK - Dark. Each



SPECIALTY FINISH

QUALASOLE - THE MODERN FRENCH POLISH

Qualasole requires no oil when polishing, padding, touching up, or renovating. Apply Qualasole with a pad to raw wood or over any cured shellac, varnish, lacquer, paint or enamel finish. A superior and more durable effect is obtained in one tenth of the time as compared to the old method. Quart bottle.

No. 1484 - Qualasole French Polish. Each



SOLVENTS

WOOD ALCOHOL DISSOLVENT FOR ALCOHOL ANILINE DYES

Also known as Colombian Spirits, or Hastings Spirits. Used to manufacture varnishes, removers, and as a dissolvent for alcohol soluble Aniline Dyes. Quart Can.

No. 1443 - Wood Alcohol Dissolvent. Each



BEHKOL PROPRIETARY SOLVENT

Used to cut dry shellac, manufactured spirits, stains and varnishes. Quart can.

No. 1449 - Behkol Proprietary Solvent. Each



NAPHTHA SOLVENT AND THINNER

Recommended reducer for Behlen Pore-O-Pac Wood Filler. Also may be used for paints, varnishes, enamels and general clean up of these finishes. Do not use for lacquers. Quart can.

No. 1450 - Naptha Solvent and Thinner. Each



FINISHING SUPPLIES



AEROSOL SPRAY LACQUERS

Especially formulated to enable the experienced as well as the novice to do a professional job. Unfinished and finished wooden arms, legs, scuffed and rubbed through areas can be finished with ease by simply applying the desired shades. If a more durable lasting finish is required, follow up with an application of Sanding Sealer and complete with clear lacquer in the desired sheen (gloss or satin). This product is economical, easily applied and dries quickly. 13 oz. can. Each

Available in the following colors:

- No. 1417-F26** - Flat Black
- No. 1417-G26** - Gloss Black
- No. 1417-S26** - Satin Black
- No. 1417-78** - Van Dyke Brown
- No. 1417-58** - Cherry
- No. 1417-L54** - Light Fruitwood
- No. 1417-32** - Brown Mahogany
- No. 1417-31** - Dark Mahogany
- No. 1417-29** - Medium Mahogany
- No. 1417-73** - Red Mahogany
- No. 1417-92** - Maple
- No. 1417-54** - Royal Maple
- No. 1417-15** - Golden Oak
- No. 1417-13** - Natural
- No. 1417-22** - Medium Oak
- No. 1417-18** - Burnt Umber
- No. 1417-17** - Raw Umber
- No. 1417-09** - American Dark Walnut
- No. 1417-50** - Extra Dark Walnut
- No. 1417-53** - Medium Brown Walnut
- No. 1417-G04** - Gloss White
- No. 1417-60** - Piano Gold



EPOXY PUTTY STICK

Contains resin and hardener in an easy to mix tube form. Break off a piece of the putty stick; knead it and apply to the surface. (10 minutes working time.) After 20 minutes the repair is cured and ready to be sanded, drilled, stained and finished.

No. 470 - Epoxy Putty Stick. Each



ULTRA MARK™ 2000 MARKER

These valve type markers seal, stain and finish in one easy step. Ideal for edge and scratch recoloring. Touch Up Markers are available in many of the most popular shades and can be applied over wood fills, "rub throughs" or worn edges to create an invisible repair. Touch Up Markers may be used with all types of finishes without worry. Each

Available in the following colors:

- No. 1448-26** - Black
- No. 1448-78** - Brown Van Dyke
- No. 1448-58** - Cherry
- No. 1448-54** - Fruitwood
- No. 1448-32** - Brown Mahogany
- No. 1448-31** - Dark Mahogany
- No. 1448-20** - Light Mahogany
- No. 1448-29** - Medium Mahogany
- No. 1448-73** - Red Mahogany
- No. 1448-44** - Royal Maple
- No. 1448-15** - Golden Oak
- No. 1448-22** - Medium Oak
- No. 1448-17** - Raw Umber
- No. 1448-07** - Brown Walnut
- No. 1448-09** - Dark American Walnut
- No. 1448-50** - Extra Dark Walnut
- No. 1448-08** - Medium Light Walnut
- No. 1448-04** - White



FINISHING SUPPLIES



BURN-IN BALM

Heat resistant paste used to prevent damage to surrounding finish while performing burn-in repair. 4 oz jar.

No. 1451 - Burn-In Balm. Each



PORE-O-PAC PASTE WOOD FILLER

Solvent base. Pore-O-Pac Paste Wood Filler is used for filling open grained wood. A fine blended mixture of silica, pigments and a suitable vehicle. It provides a smooth, glass-like surface for subsequent finishing coats. Quart can.

No. 1440A - Mahogany. Each

No. 1440C - Natural. Each

No. 1440D - Medium Brown Walnut. Each

No. 1440F - Grain Filler Reducer. Each



FILL STICKS

A rub-on wax pencil that fixes and eliminates scars, scratches, gouges, and abrasions on furniture, picture frames, leather, china, plastics and paneling. Accepts any type of top coat. Each

Available in the following colors:

No. 1447-08 - Black

No. 1447-18 - Burnt Umber

No. 1447-25 - Champagne

No. 1447-06 - Cherry

No. 1447-05 - Fruitwood

No. 1447-01 - Mahogany

No. 1447-32 - Brown Mahogany

No. 1447-17 - Light Mahogany

No. 1447-12 - Medium Mahogany

No. 1447-73 - Red Mahogany

No. 1447-09 - Maple

No. 1447-15 - Golden Oak

No. 1447-22 - Medium Oak

No. 1447-04 - Extra Dark Walnut

No. 1447-10 - Dark American Walnut

No. 1447-03 - Light Walnut

No. 1447-11 - Medium Brown Walnut

No. 1447-07 - White



SCRATCH REMOVER

Behlen Master Furniture Scratch Remover Markers are as easy as writing. As it permanently stains wood, it refinishes worn out spots and scratches on furniture, wall paneling, leather, vinyl, picture and mirror frames. Dries instantly! Each

Available in the following colors:

No. 1301-08 - Black

No. 1301-14 - Dark Brown

No. 1301-06 - Cherry

No. 1301-05 - Fruitwood

No. 1301-01 - Mahogany

No. 1301-73 - Red Mahogany

No. 1301-09 - Maple

No. 1301-13 - Natural

No. 1301-07 - Golden Oak

No. 1301-11 - Medium Brown Walnut

No. 1301-04 - Extra Dark Walnut

No. 1301-03 - Light Walnut



FINISHING SUPPLIES



ELECTRIC CEMENT KNIFE HEATER

Eliminates the hazard of fire where lacquers and shellacs are used. Heats to correct temperature in a few minutes and is maintained automatically.

No. 180 - Electric Knife Heater. Each



BURN-IN KNIFE

3" curved blade. 7" overall length. Hardwood handle.

No. 183 - Burn-In Knife. Each



BURN-IN KNIFE

3" spatula straight blade. 6-1/2" overall length. Hardwood handle.

No. 182 - Burn-In Knife. Each



OPAL CEMENT KNIFE

Tool steel, holds heat. Chisel edge for fast smooth fill-in.

No. 1400 - Opal Cement Knife. Each



ELECTRIC BURN-IN KNIFE

An essential tool for the refinisher. It features rugged construction and long element life. Interchangeable blades are shaped so that small patches can be made and smoothed easily. 20 watts.

No. 80 - Burn-In Knife with Flat Blade only. Each

No. 80C - Curved Blade only. Each

No. 80F - Flat Blade only. Each



HEAT CONTROL UNIT

Use with the electric burn-in knife to regulate the heat of the blade as not to scorch or burn surface surrounding the repair. Also works with the electric oven. Eliminates the worry of an overheated knife.

No. 906 - Heat Control Unit. Each



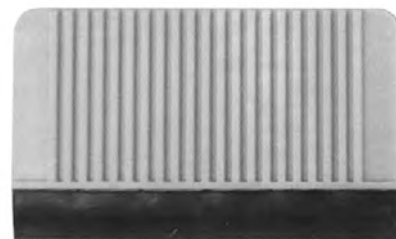
RUBBING AND POLISHING FELT

4" x 6" pads.

No. 318 - Coarse Gray. 3/8" thick. Each

No. 319 - Fine White. 3/4" thick. Each

SPECIALTY ITEMS



GRAIN FILLER / SPREADER / LEVELER

This tool has a hand fitting shape and firm rubber base allows for a quick, easy and even application of grain fillers.

No. 414 - Each



FINISHING SUPPLIES



TRANSFER LETTERS

For identification or decoration. Can be transferred to wood or metal. Complete alphabet. 1/2" gold letters, black border.
No. 840 - Transfer Letters. Per set

STEEL WOOL

Made of long, resilient strands for more effective cleaning and polishing. 8 pads to a package.

- No. 412-4/0** - Grade 4/0. Super Fine. Each
- No. 412-3/0** - Grade 3/0. Extra Fine. Each
- No. 412-2/0** - Grade 2/0. Very Fine. Each
- No. 412-0** - Grade 0. Fine. Each
- No. 412-1** - Grade 1. Medium Fine. Each
- No. 412-2** - Grade 2. Medium Coarse. Each



ABRASIVE CORD

Round .055 diameter abrasive cord for deburring and cleaning agraffe holes or other hard to reach areas. Spool contains 50 feet.

No. 561 - Abrasive Cord. Each



HANDY "WIPE RAGS"

Here is that truly hard to find item. A first grade select quality wipe rag assortment. Good rags are hard to find but now this problem is solved. Big, soft, absorbent, economical, sterilized rags in assorted heavy & light weights. Packed in handy 10 lb. cartons.

No. 1310 - Per 10 lb. Carton. Each



DUST WIZARD

Attracts dust like a magnet...The professional's Dust Cloth. Uses no contaminating chemicals or oils. Environmentally safe. Washable...reusable...outlasts cotton. Each unit contains 3 large 12" x 18" cloths.

No. 1309 - Each

TARNITE METAL POLISH

Specially formulated to clean, shine, and protect brass, copper, bronze, pewter, stainless steel, aluminum, and chrome. 9 oz. can.

No. 1488 - Metal Polish. Each



PUMICE STONE (NOT SHOWN)

Excellent quality American ground. Noted for its uniform grades. 1 lb. Packages.

- No. 411-O** - Extra Coarse. Each
- No. 411-F** - Coarse. Each
- No. 411-FF** - Medium. Each
- No. 411-FFF** - Fine. Each
- No. 411-FFFF** - Extra Fine. Each

WET OR DRY GARNET PAPER (NOT SHOWN)

A waterproof, flexible, finishing paper, coated with tempered garnet mineral, especially designed for use with water in sanding and rubbing varnished surfaces. Can also be used dry or with oil. 9" x 11" single-faced sheets.

- No. 2/0** - Grit 2/0. Each
- No. 4/0** - Grit 4/0. Each
- No. 6/0** - Grit 6/0. Each

GARNET CABINET PAPER (NOT SHOWN)

Fine quality 3M brand for sanding. Not to be confused with ordinary sandpaper.

- No. 1/2** - Grit 1/2. Each
- No. 1** - Grit 1. Each
- No. 1-1/2** - Grit 1-1/2. Each



KONIG REPAIR PRODUCTS

KONIG POLYKING POLYESTER REPAIR PRODUCTS



The Konig Company of West Germany is the European leader in the development and manufacturer of "State of the Art" refinishing and touch-up materials. Over 40 years ago, German piano makers started using polyester finishes - just in the past few years, German chemists have found a fool-proof way to fix them.

In the past, polyester repair was complicated by long curing times, unpredictable chemical reactions and a short shelf life for the polyester. Nowadays, a 9 month shelf life is guaranteed, but realistically, you can expect the polyester to last 18 months. Also, the hardening process only takes twenty minutes so you can see same day results.

For the past few years, Schaff has been the exclusive U. S. A. piano industry distributor of Konig polyester repair products. Just recently, a two hour instructional video was made that coordinates with the 22 page polyester repair manual, to show all of the aspects of polyester touch-up. With the Polyking Repair Kit, everything except a chisel and some tape is included to make fast, "factory perfect" repairs.

Polyester repair is the perfect partner to piano tuning and repair. For the young technician, polyester repair opens doors to new piano dealers and their customers. For the veteran technician, polyester repair provides a break for the ears. Alternating your appointments between tuning and polyester repairs means fewer tunings with more profit, since the going rate for a one visit repair is about 75% greater than for a piano tuning. You cannot make a better investment, as the cost of a Polyking Repair Kit is about the same as a couple of piano tunings.

Konig has a full range of products for the lacquer and polyester industry. Schaff maintains a stock of polyester based wood fillers, stains, high gloss touch-up pens, rubbing compounds, polishing liquids and Lack 20 polyester.

No. 441 - Polyking Repair Kit With Instructional Video. Each
No. 439 - Polyking Repair Kit Only. Each
No. 1730F - Video - Instructional Video. Each
No. 1730F - DVD - Instructional Video. Each



KONIG REPAIR PRODUCTS



POLYESTER LACQUER

Hardener included.

- No. 442A** - 100 ml., Approx. 4 oz. Bottle. Each
- No. 442B** - 500 ml., Approx. 17 oz. Bottle. Each
- No. 442C** - 1 Liter Approx. 34 oz. Bottle. Each



KANTEN-FIX GLOSS TOUCH-UP PENS

- No. 457A** - High Gloss Black Color. Each
- No. 457E** - Gloss Lt. Walnut / Teak Color. Each
- No. 457F** - Gloss Dark Walnut Color. Each
- No. 457G** - Gloss Red Mahogany Color. Each
- No. 457H** - Gloss Dark Red Mahogany Color. Each



REX-LITH POLYESTER FILLER

- No. 458A** - Brown Color, 150 g. Each
- No. 458B** - White Color, 200 g. Each
- No. 458C** - Clear Color, 120 g. Each

CHEESECLOTH (NOT SHOWN)

No. 1425 - 1-1/2 sq. yd. Each

PLASTIC SHEETS FOR DAM CONSTRUCTION (NOT SHOWN)

No. 449 - 5 ea. 8" x 10". Per Pkg.

POLYESTER REPAIR MANUAL (NOT SHOWN)

No. 453 - 22 pages. Each

SANDPAPER (NOT SHOWN)

- No. 454** - 500 Grit. Per sheet
- No. 455** - 1,000 Grit. Per sheet
- No. 456** - 1,500 Grit. Per sheet

CANTON BUFFING WHEELS (NOT SHOWN)

- No. 465** - 8" wheel. Each
- No. 466** - 10" wheel. Each

PAINT BOX (NOT SHOWN)

Allows for a custom color match in moments.
Includes brush.

No. 467 - Each

INTENSIVE BLACK COLOR

This is a special combination of pigment and dye designed to blend with polyester lacquer. Use this for most ebony finishes. 30 ml.

No. 443A - Intensive Black Color. Each



RUBBING, POLISHING AND WAX COMPOUNDS

- No. 445** - K01 Rubbing Compound, 100 g. Each
- No. 446** - K02 Rubbing Compound, 100 g. Each
- No. 447A** - K03 Polishing Liquid, 150 ml. Each
- No. 447B** - K03 Polishing Liquid, 1 Liter. Each
- No. 448A** - BP4 Polishing Liquid, 150 ml. Each
- No. 448B** - BP4 Polishing Liquid, 1 Liter. Each
- No. 462** - Menzerna Wax 6 Buffing Compound, 850 g. Each
- No. 463** - Menzerna Wax 16 Buffing Compound, 850 g. Each

